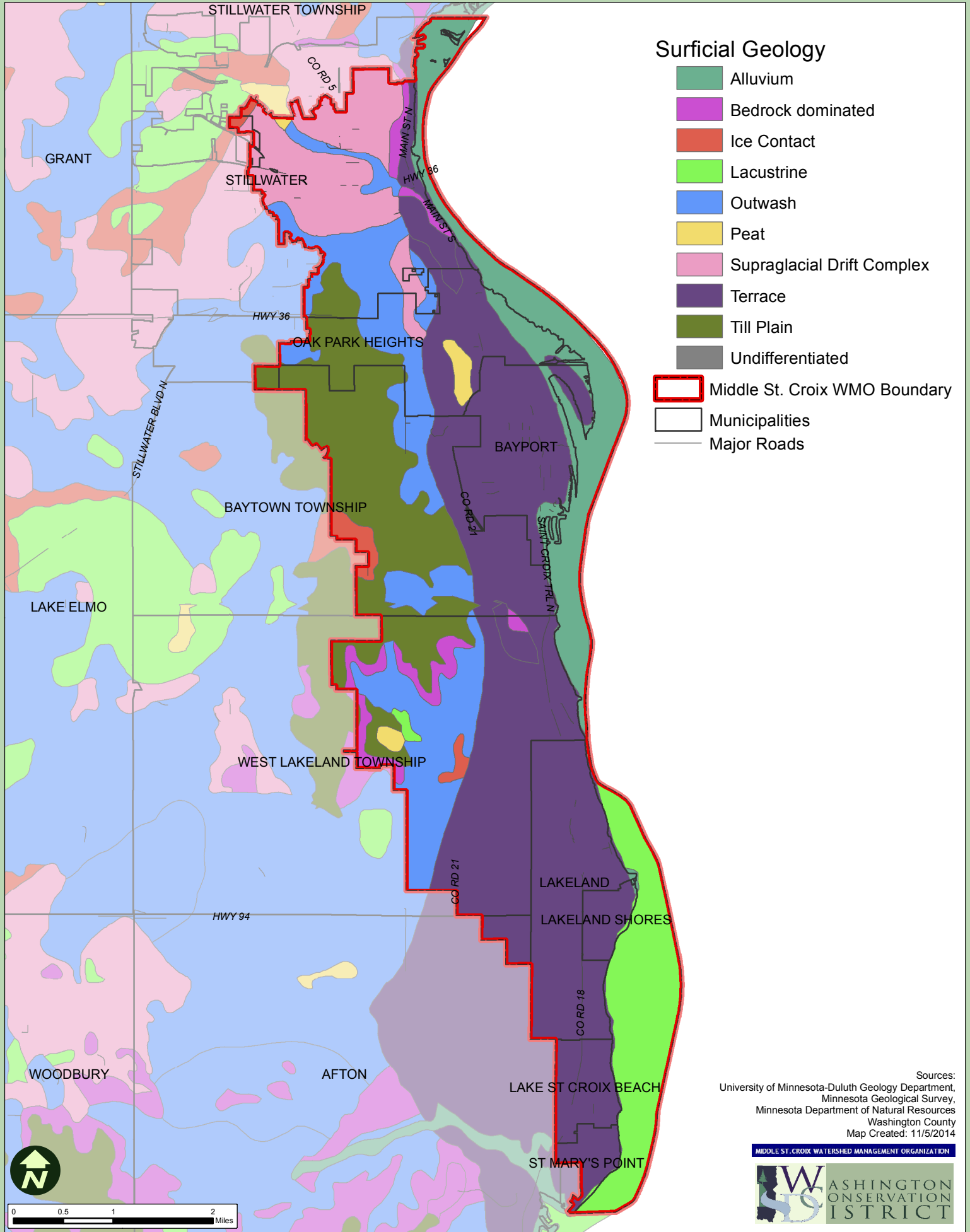


Figure 2.3 Surficial Geology



Surficial Geology

- Alluvium
- Bedrock dominated
- Ice Contact
- Lacustrine
- Outwash
- Peat
- Supraglacial Drift Complex
- Terrace
- Till Plain
- Undifferentiated

- Middle St. Croix WMO Boundary
- Municipalities
- Major Roads

Sources:
 University of Minnesota-Duluth Geology Department,
 Minnesota Geological Survey,
 Minnesota Department of Natural Resources
 Washington County
 Map Created: 11/5/2014

